



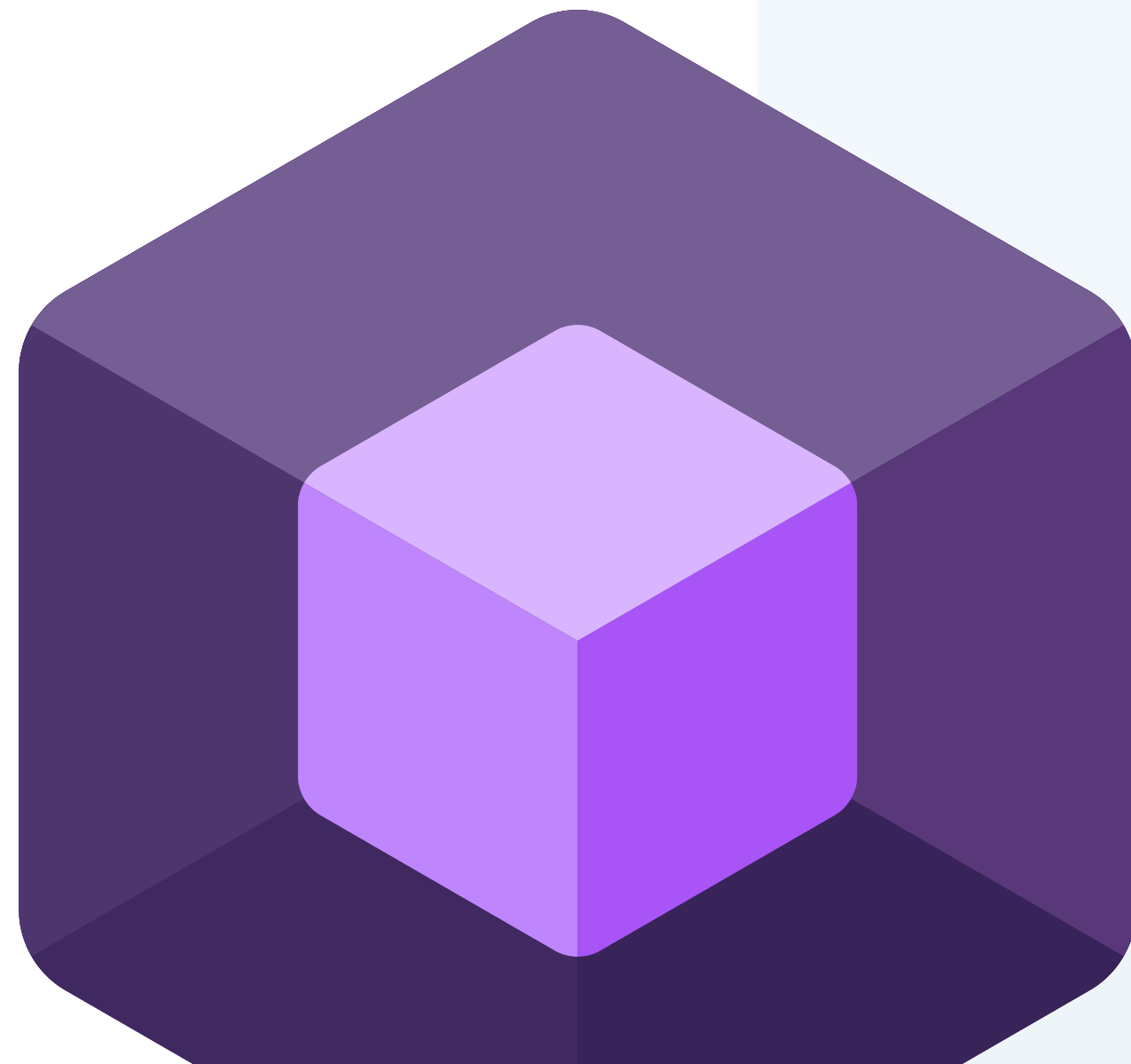
PROLAG WMS

The heart and soul of
your material flow

PROLAG WMS

The heart and soul of your material flow

PROLAG WMS is the centrepiece of the **PROLAG World** intralogistics software suite. Over 150 modules with multiple configuration parameters allow any type of warehouse to be mapped in the system. Our warehouse management system manages every aspect of your intralogistics, providing all important data at a glance. Maximum levels of standardisation mean short project phases and a high degree of investment security, with long-term system stability and flexibility guaranteed thanks to optimised, tailored processes.



”

Once upon a time, in a faraway intralogistics world ...

The pallets are piling up at the goods receipt area, there's an employee sitting at their terminal drenched in sweat and trying desperately to get a handle on the chaos, forklift drivers are getting in each other's way in the aisles, and the location suggestions being churned out are turning picking into a nightmare. Orders are pouring into the control centre from the ERP system, red lights are flashing all over the place showing the time targets for shipping and there are carriers waiting impatiently to finally get on the road. There are assignment errors being made all over the place and orders that need to be cancelled.

As if things aren't bad enough already, the employee in charge of returns is out sick. And then the boss announces an upcoming audit at a major customer: everything's got to be working by then. A shriek in the warehouse, commotion, panic. There's been an accident in aisle 3 – the blocked forklifts have fallen victim to the new automatic guided vehicle. Someone's sitting sobbing at warehouse control, and everyone's given up completely at the goods issue area. Is it time to go home yet? Forget it ...

Sounds like a nightmare? It's high time to wake up.

With our software, you'll finally enjoy dreaming about your intralogistics again: PROLAG World is user-friendly, modular, standardised – and 100% reliable.

“

PROLAG WMS

- Efficiency all the way from goods receipt all the way though to goods issue
 - Your intralogistics optimally tailored to your processes
 - Intelligent location suggestions
 - Standard software
 - Fully configurable
 - Industry-specific configurations
 - Route optimisation with our mobile Android app, **PROLAG Go**
 - Resource management
 - Shipping notice management
 - Returns management
 - Flexible retrieval strategies
 - Multi-order picking
 - Pick & pack
 - Location management and multiple site capability
 - Empties management
- ... and much more.

All your
intralogistics data
and information
at a glance

PROLAG WMS – programmed intralogistics expertise

Intralogistics is our passion and warehouse management our favourite pastime. Since the company was founded in 1985, CIM has been handling the requirements of logistics and production companies and translating these requirements into software solutions. After more than four decades of digital pioneer work, multiple innovations in the WMS sector and continuous implementation of the latest trends and technologies in software design, the company has grown to become one of the key players in the field of warehouse management software.

In a sector where customised software is still common, we have poured our wealth of experience and expertise into creating a fully configurable standard software suite. Our system is available as a cloud-based or on-premises solution, it is modular, browser-based, fully configurable with over 1,000 parameters, intuitive and optimised for mobile use thanks to its responsive design. Our focus is always firmly on real-world warehouse practices. All processes are tested for feasibility and industry suitability, tailored to the relevant storage technologies and optimised to create the perfect material flow.



– BROWSER-BASED – MODULAR – CONFIGURABLE

Goods receipt – from shipping notice management to putaway strategies

PROLAG WMS is essentially an intermediary software – it acts as a broker between the multiple requests from the ERP system and the practical demands made of the logistics specialists. Much of what is routine for a software solution requires a great deal of manual effort. PROLAG WMS can be seen as a digital enhancement of human capabilities, with functions that save valuable time and resources in warehouse operations right from the goods receipt stage. The shipping notice management functionality provides detailed information about pending deliveries, allowing articles to be assigned and storage locations reserved in advance. This significantly streamlines and accelerates the goods receipt process.

Intelligent storage strategies based on statistical analyses and live warehouse data ensure optimal storage location suggestions. Factors like expiry date, storage characteristics such as height and size of articles and shelves are taken into account and allowances are made for hazardous materials storage. And even goods issue is optimised as soon as your articles are first entered in PROLAG WMS.

PROLAG World
QS4.3.1 Testsystem

I-Punkt (geplant)

1 Datensatz auswählen
Bestellposition

2 Daten erfassen

3 Ziel ermitteln

Tabellenansicht Einzelsicht Misch-Lhm abschließen Crossdockingbereich Transportwagen abschließen

Alle System

Bestellnummer B-20001--0 Bestellposition 1 Status erfasst

Artikelnummer 20001 Artikelbeschreibung Cornflakes Umverpackung

Transport-Lagerhilfsmitteltyp Chargennummer Herstellzeitpunkt

Benennung 1 Seriernumpelpool

Benennung 2 Warenausgangsposition

Benennung 3 Anzahl Zusatztexte 0

Benennung 4 Zusatztext Bestellposition

Bestellmenge 1000 Stck zugegangene Menge 3 Stck noch zu erfassende Menge 997 Stck

gebuchte Menge 0 Stck Mengeneinheit Stck Prüfmenge 0 Stck

MHD Packungsgröße 0 Stck SSCC

Unter-NVEs QS-Merkmal

QS-Grund gesperrt Sperrgründe

zugegangene Menge QS 0 Stck Anliefertag Lagergruppe HRL

Anzahl Unterpackungen 0 Bewegungsklüssel Teillieferung Überlieferungs-Modus NIE

Kundensnummer für Durchläufer Lieferscheinnummer Kommissionsware

Kommissionsnummer Merkmal 1 Merkmal 2

Merkmal 3 Merkmal 4 Merkmal 5

Merkmal 6 Merkmalbox 7 Merkmalbox 8

Weiter

PROLAG World
QS4.3.1 Testsystem

I-Punkt (geplant)

1 Datensatz auswählen

2 Daten erfassen
Daten erfassen

3 Ziel ermitteln

Übersicht Direkteinlagern & Ort prüfen Bestellinformationen Wareneigenschaften Menge & Gewicht Datum & Uhrzeit Drucken Gefahrstoff

Artikelstamm 20001 Artikelbeschreibung Cornflakes Eigentümer Cim

WE-Bereich WE-BEREICH1 Bestellposition B-20001--0--1 Bestellposition Bestellmenge 1000 Stck

Bestellposition noch zu erfassende Menge 997 Stck

Bild-Pool

Einlagermenge * 50 Stck Mehrfacheinlagerung 1 Vorschlag Umverpackung * 20001--Stck

Umverpackung Menge 1 Stck Packungsanzahl * 50

Transportwagen-Lhmtyp Transportwagen-ID offene Transportwagen

Transport-Lhmtyp * Euro-Palette Sektor Lagerhilfsmittel-ID offene Misch-Lagerhilfsmittel

Sektorierung * 4er Orientierung * A Sektoren * 1

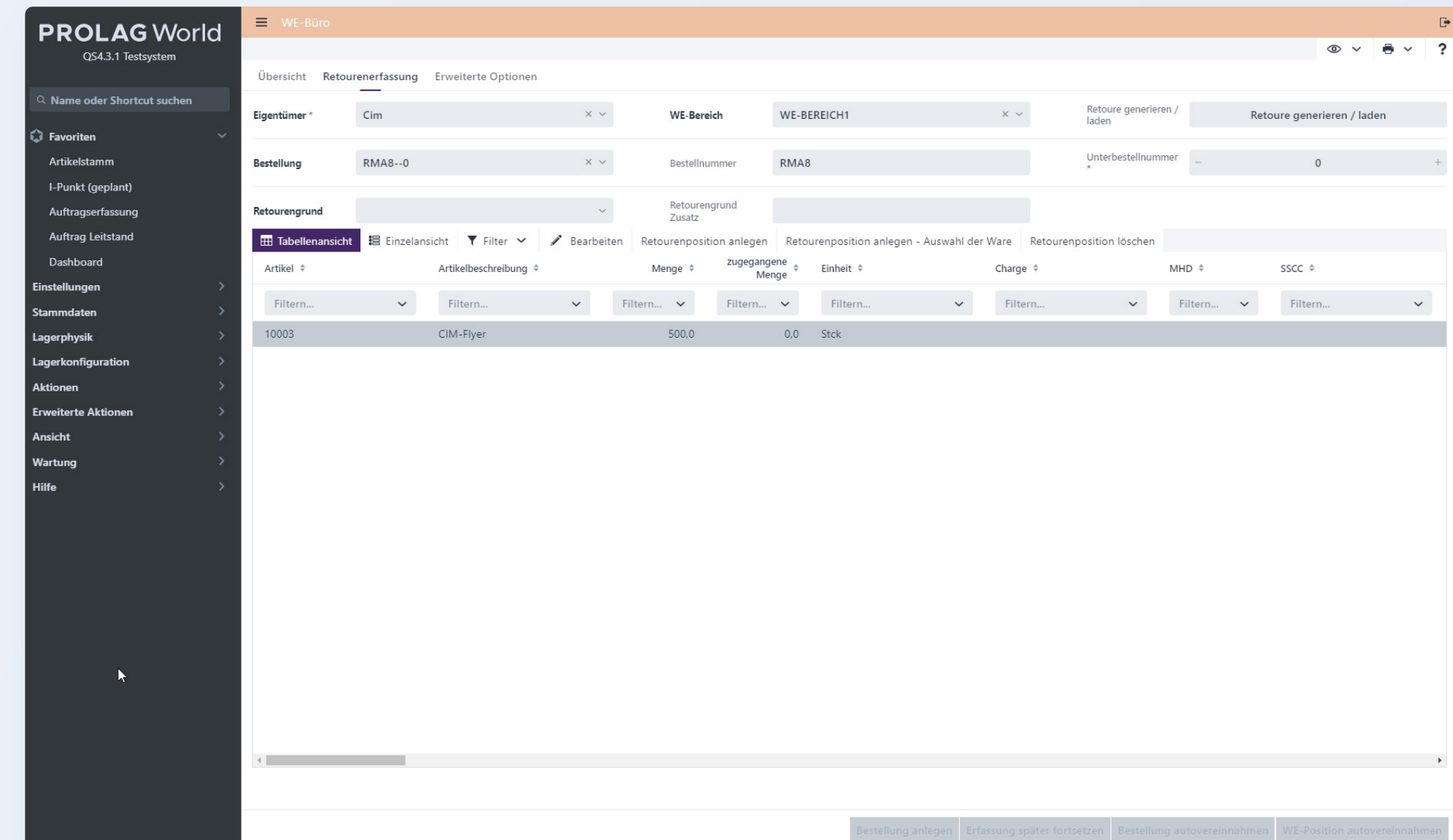
sektorierungVorschau

Zurück Ware auf Misch-Lhm erfassen

Practical and intelligent: PROLAG WMS returns management

The returns rate in some segments has grown to as much as 70 % in recent years. The fast growing e-commerce and online shopping sectors mean that it is extremely easy to order goods and cheap to return them. With the volume of products going to private customers steadily increasing, sustainable and economical returns management is now a key challenge for intralogistics.

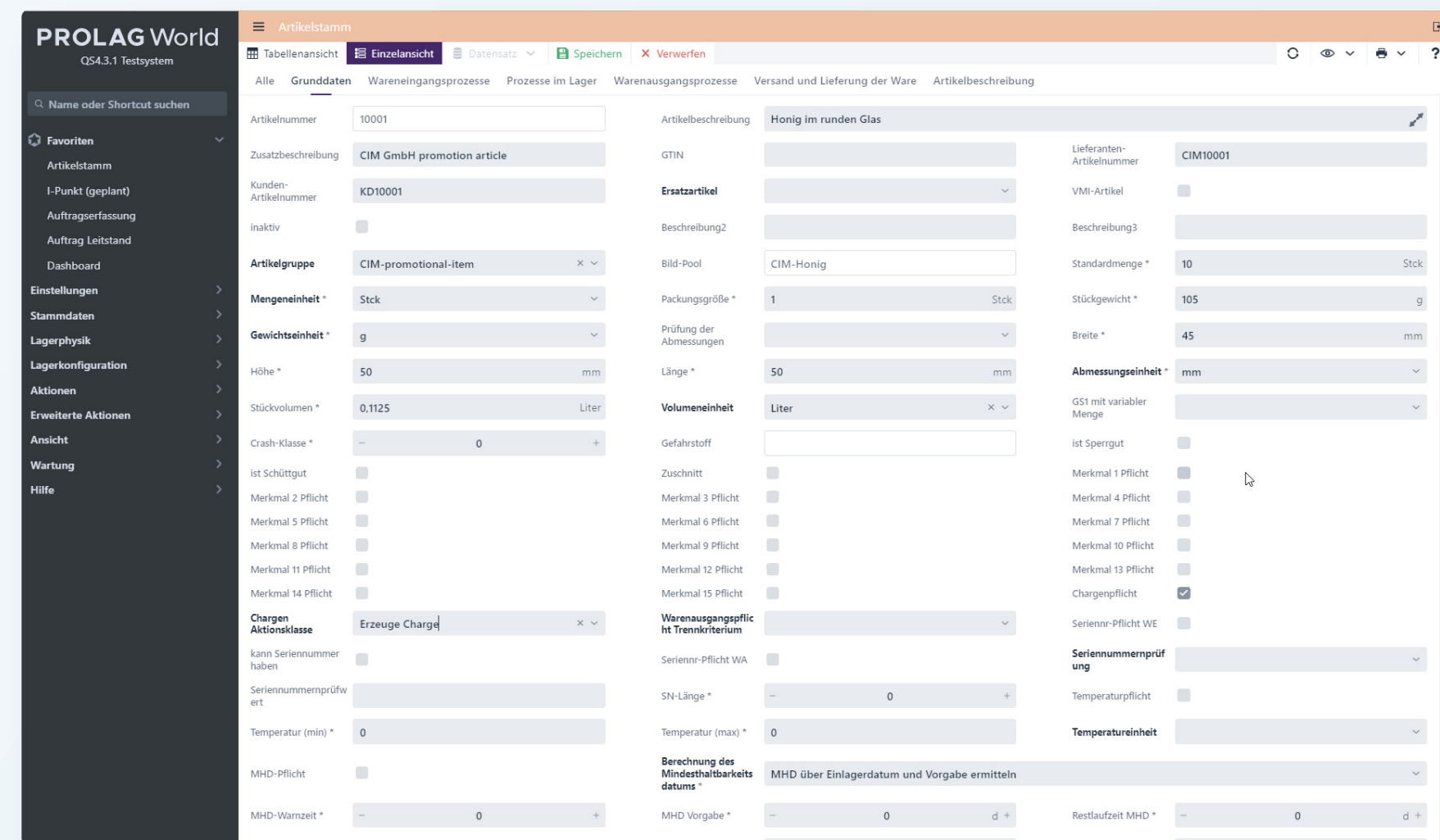
Returns management in **PROLAG WMS** is a practical and intelligent tool for handling returns and is suitable for any size of company. Making optimal use of the available warehouse data, **PROLAG World** allows easy identification of returns at goods receipt with all article-specific warehouse data and fast returns processing.



Quick and easy identification of returns.

Batch management: reliable and standard

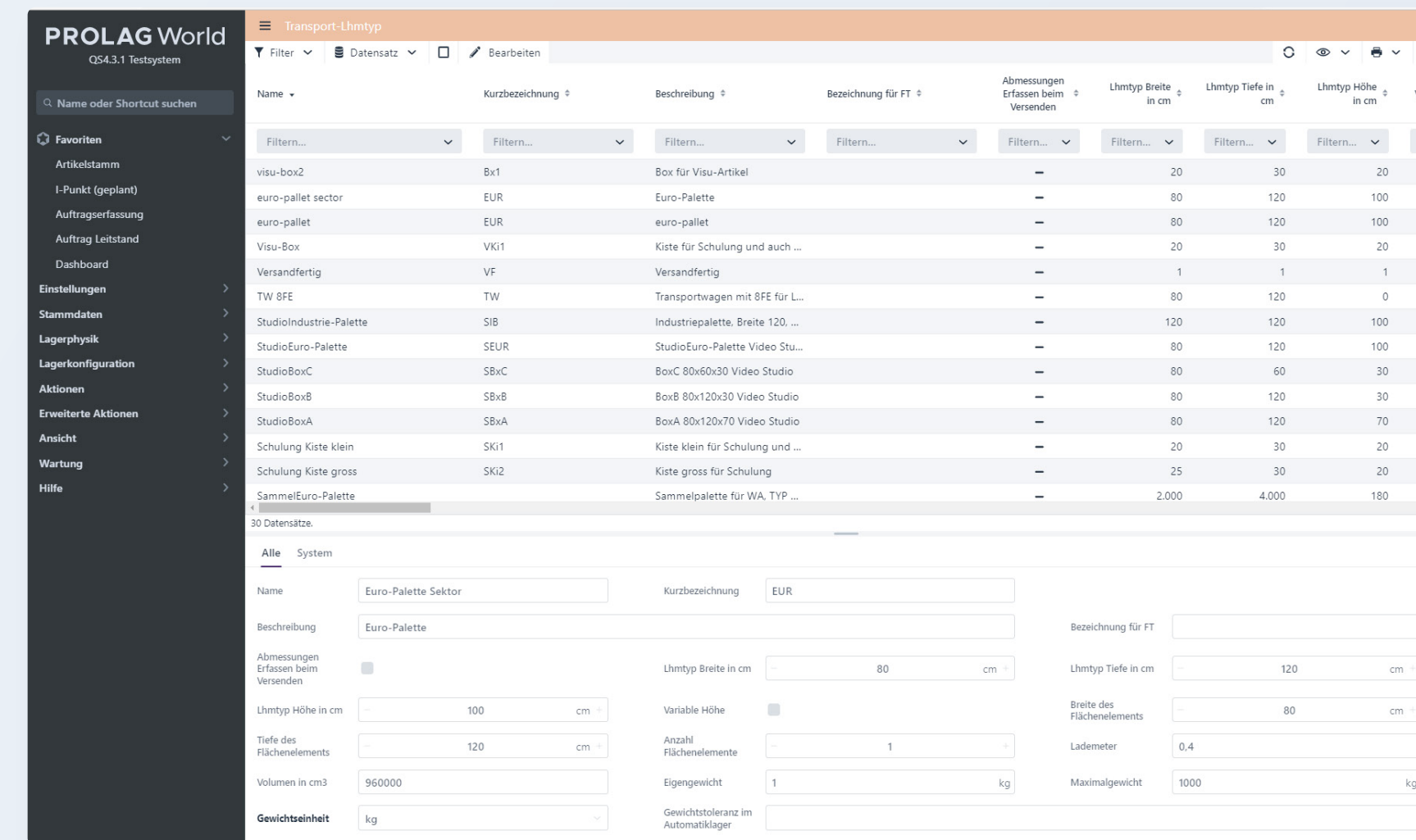
Central to manufacturing companies of all kinds is batch management, one of the key features of **PROLAG World**. There is a dedicated module designed to enable seamless tracking of articles and resources in a variety of sectors. This capability is essential for the food industry, particularly since the introduction of EU Regulation 178/2002. However, manufacturing industries such as the automotive, medical and chemical sectors also have a strong interest in accurate information about their supply chains. Thanks to **PROLAG World** batch management, this can be implemented as standard in logistics and production companies all the way from goods receipt to goods issue.



Seamless article tracking.

Empty pallet management: professional and secure

3PL service providers and freight forwarders are confronted with a multitude of empties and empty pallet owners which are impossible to keep track of without a sophisticated system. With its functionality for empties and empty pallet management, **PROLAG World** enables users to handle a wide variety of freely definable transport load units or pallets. This includes tracking and return of empty load units within a logistics centre, including administration of forwarder and owner accounts.

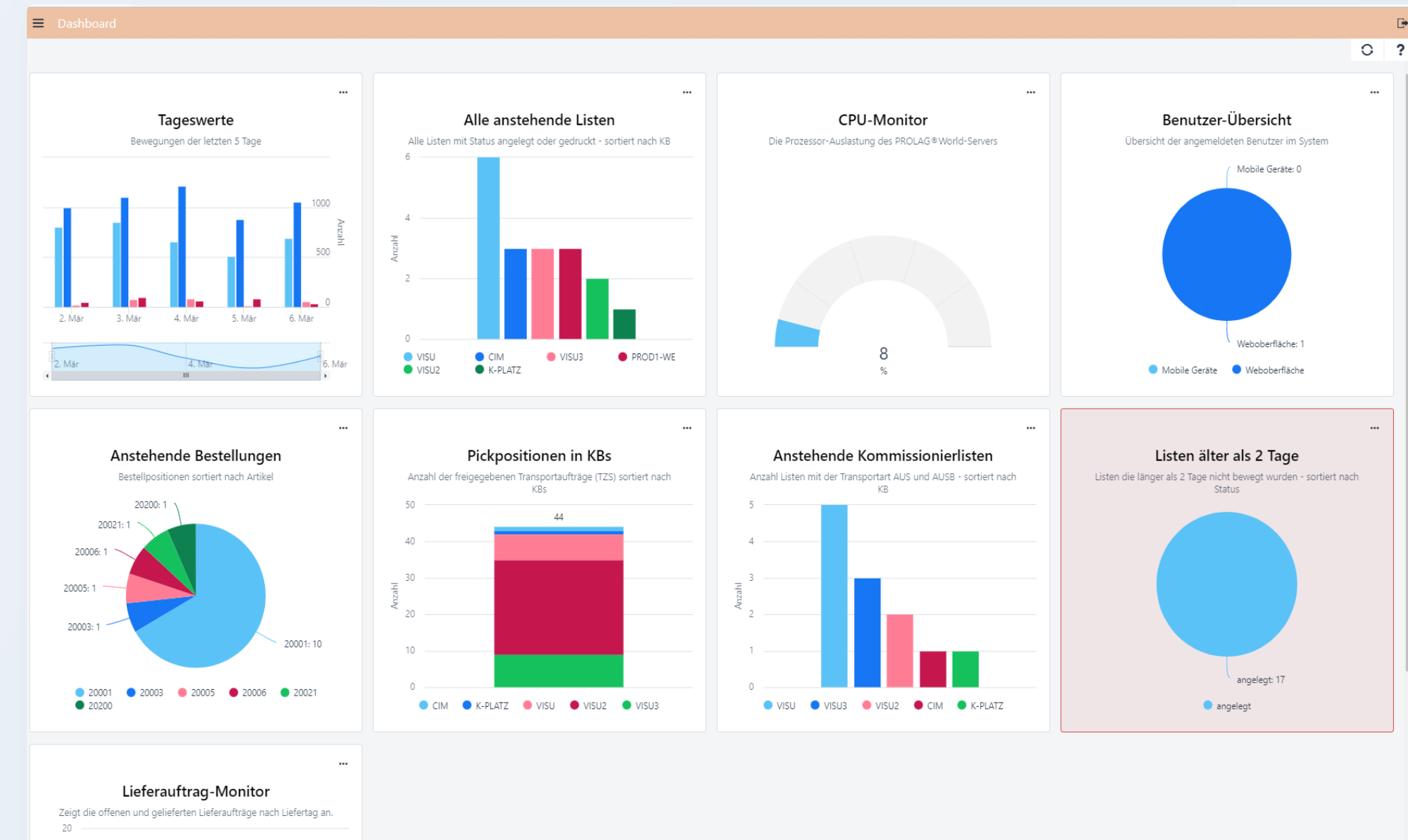


Tracking of empty load units.

Data, data, and more data – perfect business intelligence for your intralogistics

Efficiency is an overused buzzword in WMS marketing – everyone wants to make their intralogistics faster, cheaper and better, after all. Another word that’s been omnipresent in recent years is sustainability – because efficiency means saving time and resources. This insight is reflected in the fact that one of the most frequently used modules in **PROLAG WMS** is resource management.

Based on the available data in the warehouse, the system calculates article throughput times, average picking times, personnel resources and potential bottlenecks. The software can even predict the end of the working day based on the number of orders that are still pending. The data can be organised in the **PROLAG World** dashboard and automatically formatted in various diagrams and charts provided by the business intelligence tool.



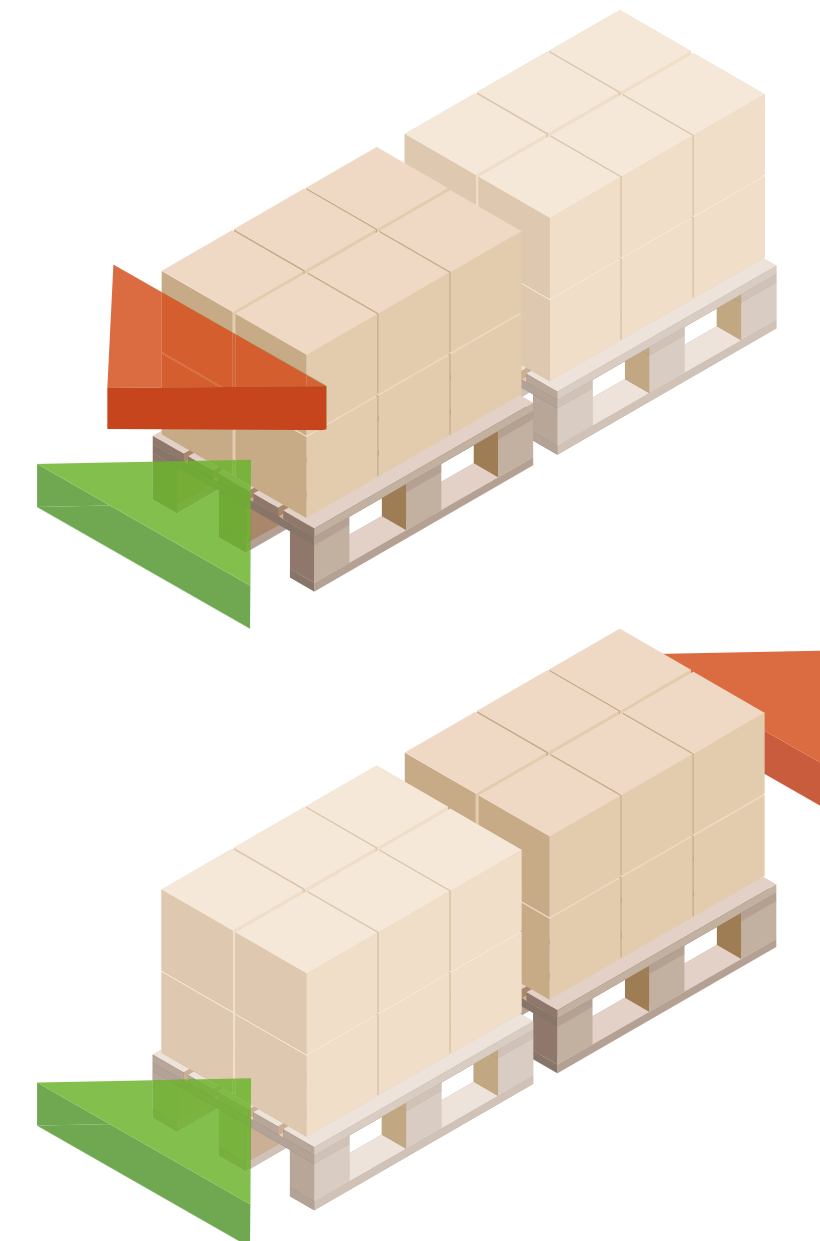
Flexible retrieval strategies for goods receipt

One of the central goals of warehouse management is to speed up outbound processes. This is achieved on the one hand through intelligent planning tools for goods receipt. In addition, we have developed tools to make the route from storage location to goods more efficient in a number of different ways. A key element is the management of picking strategies, which can be configured by the user in **PROLAG World**.

The system covers multiple different constellations so that the requested goods can be retrieved from storage as efficiently as possible. Different industries have different requirements in terms of retrieval strategies. The retrieval strategies in **PROLAG World** are highly automatable and can be set or adjusted very flexibly: goods can be retrieved according to batch and allowances are made for expiry dates, hazardous materials and even partial pallets. What's more, the strategies can be transferred from your ERP system over the host interface.

Standard stored retrieval strategies include:

- FIFO (First In – First Out)
- LIFO (Last In – First Out)
- FEFO (First Expired – First Out)
- BATCHES
- Prevention of or allowance for partial quantities
- Storage areas
- ... and much more.



Route optimisation with our mobile Android app PROLAG Go

Our Android app PROLAG Go enhances the PROLAG World intralogistics suite to enable the use of mobile devices in the warehouse, providing a valuable tool for optimal goods issue in your intralogistics. In addition to basic functionalities such as stock putaway, retrieval, direct retrieval, secondary picking as well as relocation and direct relocation, the app optimises your mobile intralogistics processes with sophisticated logic. A key factor is route optimisation, enabled by order analysis and dynamic retrieval control.

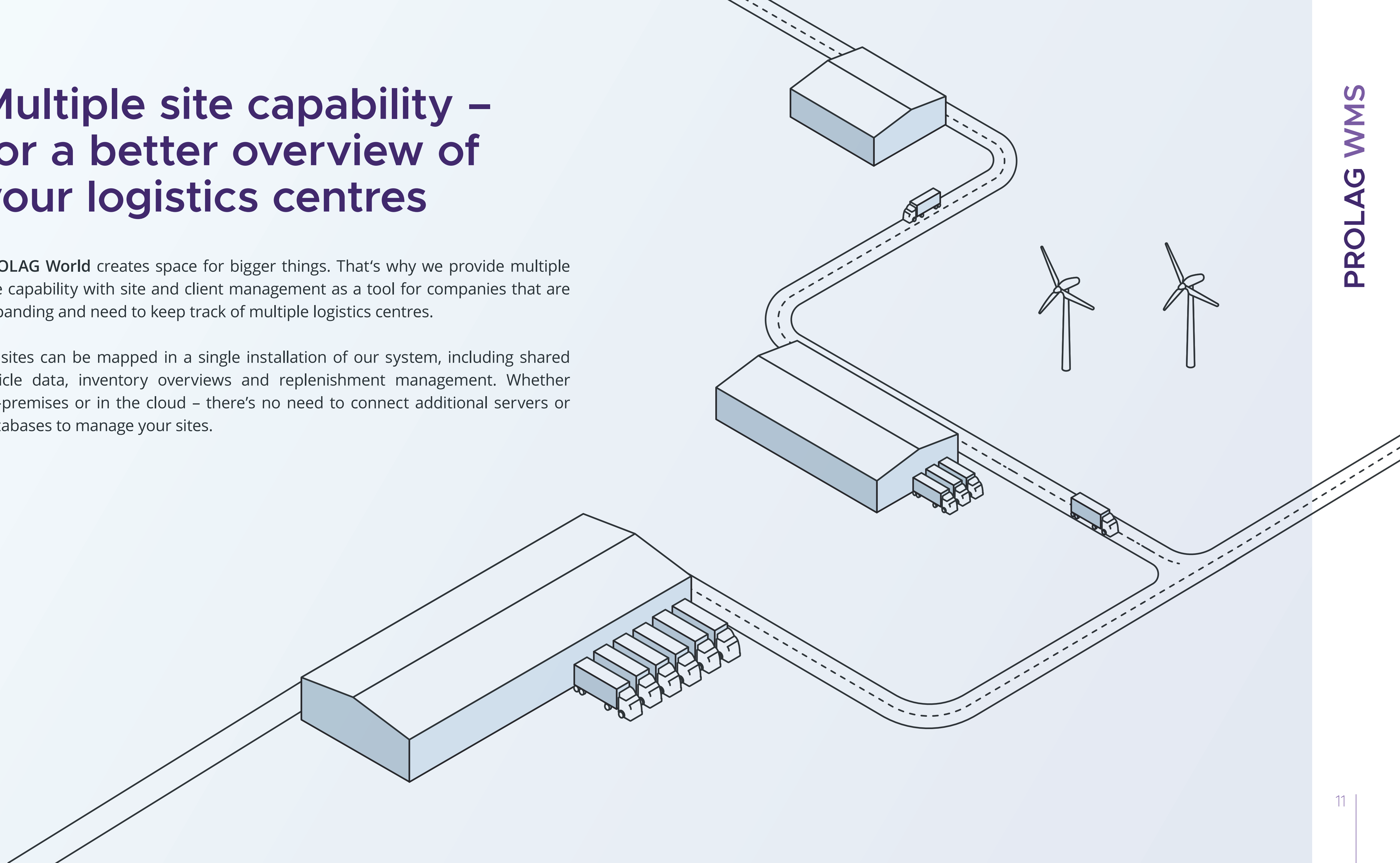
Supported by PROLAG Go, PROLAG World always knows the best paths for forklift and pedestrian traffic and also factors in height restrictions, aisle widths or restricted access zones. It selects the optimal picker or transport route based on this information. PROLAG Go also eliminates the risk of collision by allocating orders such that only a certain number of warehouse employees are allowed in a given area at any one time. Likewise, the system ensures that forklift operators and pedestrians do not use the same route at the same time in order to improve safety. There are numerous additional functions which can be configured quickly and easily in PROLAG World.



Multiple site capability – for a better overview of your logistics centres

PROLAG World creates space for bigger things. That's why we provide multiple site capability with site and client management as a tool for companies that are expanding and need to keep track of multiple logistics centres.

All sites can be mapped in a single installation of our system, including shared article data, inventory overviews and replenishment management. Whether on-premises or in the cloud – there's no need to connect additional servers or databases to manage your sites.



PROLAG WMS manages your intralogistics clearly and concisely

- Crossdocking
 - Multi-order picking
 - Expiry date management
 - Transport vehicle management
 - Dock management
 - Sequential stocktaking
 - Remaining quantities management
 - Two-step picking
- Dynamic retrieval control
 - Pick & pack
 - Order analysis
 - Highly efficient picking strategies
 - Load unit sectoring
 - Mapping of sales units
 - Quality management
 - ... and much more.



References



... and more

www.cim-logistics.com

CIM GmbH

Livry-Gargan-Straße 10
82256 Fürstenfeldbruck

☎ +49 8141 5102-0
@ info@cim.de

CIM GmbH

Münster Office
Wolbecker Windmühle 67
48167 Münster

☎ +49 2506 30615-0
@ info@cim.de

CIM GmbH

The Netherlands Office
Prinses Margrietplantsoen 33
2595 AM Den Haag

☎ +31 (0) 70 450 002-0
@ info@cim-logistics.nl



FOLLOW US

